

All pupils

	Pupils	Average GCSE Grade	Average GCSE Value Added	English (best) Grade	English Value Added	Maths Grade	Maths Value Added	Attendance
All Pupils	178	4.9	+0.4	5.5	+0.4	4.9	+0.3	93%

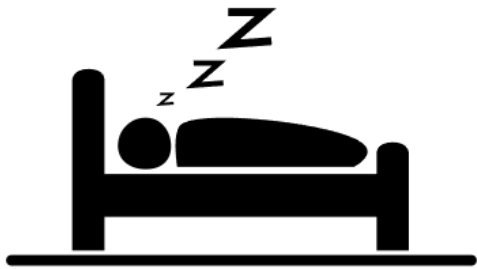
Attendance groups

Above 95%	102	5.3	● +0.8	5.9	● +0.9	5.3	● +0.6	98%
90.1 - 95%	39	4.6	+0.1	5.0	0.0	4.7	0.0	93%
80.1 - 90%	23	4.3	-0.4	5.0	-0.3	4.4	-0.3	85%
50.1 - 80%	13	3.9	● -1.1	4.6	● -1.1	3.9	● -1.1	69%
0 - 50%	1	3.1	● -2.8	3.0	● -3.6	3.0	● -2.9	33%



How do I manage my time

7 days = 168 hours



= 56 hours = 112
(based on 8 hours sleep)



= 32.5 hours hours = 79.5 hours
(based on 6.5 hours in school, excluding weekends and 1/2 term)

HOW ARE PUPILS ASSESSED

Component 1 Personal Portfolio 60%	Component 2 Externally Set Assignment 40%
<ul style="list-style-type: none">• From centre-set theme(s)• Students produce:<ul style="list-style-type: none">• supporting studies• personal response(s)• There are 72 marks available for this component	<ul style="list-style-type: none">• From an externally-set theme (released on 2 January)• Centres devise period of preparatory study in which students create preparatory studies• Students have a 10-hour sustained focus period in which to produce personal response(s)• There are 72 marks available for this component

EXTERNALLY SET ASSESSMENT

Pupils have to respond to a theme set by the exam board

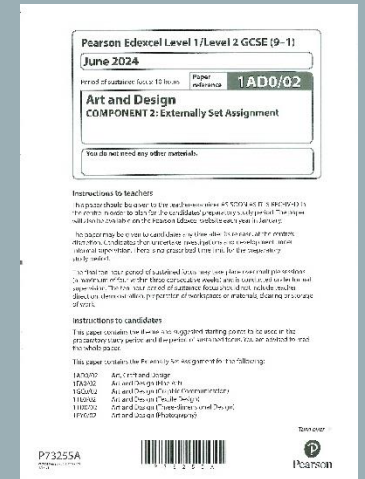
This year the theme that has been set is **'POWER'**

Investigate/interpret the theme and develop ideas

Refine their ideas through experimenting with appropriate media, materials, techniques and processes

Record their ideas, observations and insights using a range of techniques as they develop.

Present a final response to the brief. Final Art piece, 3D product or graphic outcome
(10hours exam conditions) W/C Monday 15th April



HOW ARE PUPILS ASSESSED

	Assessment Objective	Weighting
AO1	Develop ideas through investigations, demonstrating critical understanding of sources	25%
AO2	Refine work by exploring ideas, selecting and experimenting with appropriate media, materials, techniques and processes	25%
AO3	Record ideas, observations and insights relevant to intentions as work progresses	25%
AO4	Present a personal and meaningful response that realises intentions and demonstrates understanding of visual language	25%

EXTERNALLY SET ASSESSMENT AVAILABLE SUPPORT

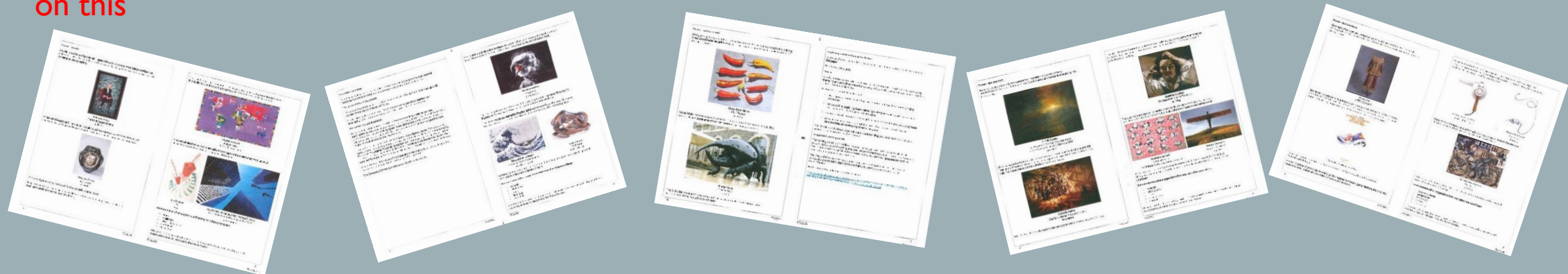
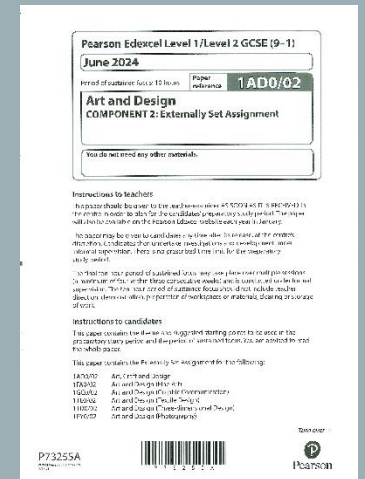
The pupils will have **29 hours of formal lessons** from 8th January to 15th April

In addition the following extra sessions will be available.

Every Thursday afternoon 3:20pm to 5pm teachers will be running extra sessions **this provides an extra 21 hours 40mins**

Every Wednesday pupils will use tutor time/lunchtime to attend an additional session **this provides an extra 15 hours 10mins**

Pupils are allowed to work on their projects at home and we would expect that they will be spending **2 hours a week on this**





Keys to Success

Benefits of attending the extra sessions

The Art & Design based courses are the highest achieving subjects in the school.

The vast majority of pupils achieve above their target grades.

The average grade achieved by pupils taking the Art & Design based courses was grade 5.

Pupils who attended extra sessions On average performed 1 grade higher than their target grades.

The average grade achieved by pupils who regularly attended the extra sessions was grade 6.

Pupils who attended the extra sessions regularly, reported lower levels of anxiety about the course and were more confident and independent in their work.



Keys to Success

Pupils should have a culture of working between lessons as well as during lessons

Observational drawing

Give your own opinions

Set personal goals to be achieved at the end of a lesson
By the next lesson.

Use own photos to inspire and record ideas as they develop

Be prepared to take a risk! Mistakes are part of the journey

Make sure you have an area to work undisturbed

Have a pencil and paper to hand at all times

Do the hard thinking to fuel inspiration

Have a space at home where you can leave your work in progress to come back to

Attend the extra sessions provided.

Stay alive to inspiration